



Address of the Academy

NATIONAL ACADEMY OF CUSTOMS, INDIRECT TAXES AND NARCOTICS
PALASAMUDRAM – 515241. GORANTLA MANDALAM, SRI SATYA SAI DISTRICT,
ANDHRA PRADESH.

Location of the Academy

Google Maps pointed at Hostel Mess of NACIN, Palasamudram:

<https://maps.app.goo.gl/AxLdFHkNuAmYPD3n6>

Note: Requested to Search for NACIN, Palasamudram on google maps rather than Palasamudram alone. There are two places named Palasamudram in the State of Andhra Pradesh, one in Chittoor district and the other in Sri Sathya Sai District. NACIN, Palasamudram is situated in Sri Sathya Sai district of Andhra Pradesh.

The campus is located on the highway NH-44 en-route to Hyderabad from Bangalore and is about 100km away from Bengaluru airport. The details of the nearest Railway / Bus Station are as below:

Nearby Railway Stations:

Name of the Station	Station Code	Distance to the campus
Penukonda	PKD	22 KM
Hindupur	HUP	31 KM

Nearby Bus Stations:

Name of the Station	Distance to the campus
Penukonda	20 KM
Hindupur	28 KM
Gorantla	11 KM

Transportation

It is suggested that the officers may reach Palasamudram campus either from Bangalore or Hyderabad. The options available to reach the campus from Bangalore/Hyderabad is detailed below

From Bengaluru:

By road: Take any bus from Bengaluru towards Ananthapuram / Kurnool / with a request to stop in front of NACIN, Palasamudram or at the Palasamudram junction.

By train: Take any train towards Hyderabad which have stops at Hindupuram or Penukonda. If alighting at Hindupur, take any bus towards Gorantla / Kadiri and get down at Palasamudram junction. If alighting at Penukonda Railway station then take buses towards Bangalore/Gorantla/Kadiri and get down at Palasamudram junction.

From Hyderabad:

By road: Take any bus towards Bengaluru with a request to stop in front of NACIN, Palasamudram or at the Palasamudram junction.

By train: Take any train towards Bangalore which has stops at Hindupuram or Penukonda. If alighting at Hindupur, take any bus towards Gorantla / Kadiri and get down at Palasamudram junction. If alighting at Penukonda Railway station then take buses towards Bangalore/Gorantla/Kadiri and get down at Palasamudram junction.

*** The above details are for reference only.**

Facilities available in the campus:

Hostel and Mess are located within the campus. Accommodation & food will be arranged by NACIN and the officers have to make payment for the same.

Hostel:



Rooms for the officers will be allotted on single occupancy basis. The allotment will be intimated before or on arrival at the campus. The charges for the rooms will be @ Rs. 2250/- (per day), the participants shall pay the room charges in full (for the total days of stay) at the time of check-in **in cash** and collect a signed receipt for the same

Hostel block has various facilities viz.,

- a) Common Facilities (Accessible to all officers staying at Hostel)
- b) Facilities/Infrastructure within the Rooms
- c) Room Services

a) Common Facilities (Accessible to all officers staying at Hostel):

Gym, Indoor Sports room, Recreation room (with 85-inch smart TV), Shuttle Court, Common utility room with 6 Washing machines which can be used free of cost, Sick Room, Paid Laundry Facilities (in addition to free washing machine facility), Library, Pantry, ATM, Tuck Shop for buying basic provisions & refreshments. Any other provisions & refreshments required may please be intimated to the Tuck shop owner/employee on payment basis in advance.

Gym (2nd Floor, Common area between A & B Blocks in Hostel Building):



Indoor Sports room:

(1st Floor, Common area between A & B Blocks)



Recreation Room:

(2nd Floor, Common area between A & B Blocks)



Shuttle Court:

(Ground Floor, A Block in Hostel Building)



Common utility room (6 Washing machines)

(Ground Floor, B Block):



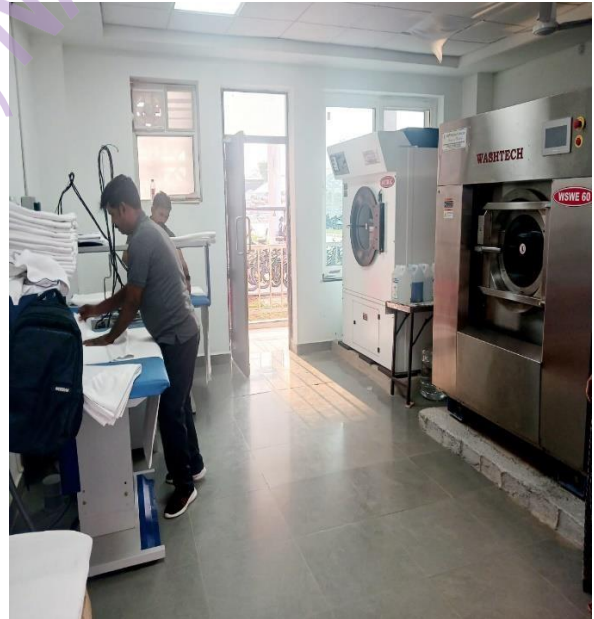
Sick Room (Ground Floor, B Block):



Paid Laundry Facilities (Ground Floor, A Block)

Paid Laundry in addition to free washing machine facility is also available and the rates are as below:

LAUNDRY SLIP			Room No :	
			Date :	
SL NO	ITEM DESCRIPTION	RATE	PCS	AMOUNT
1	Pant	30	40.00	
2	Shirt	30	40.00	
3	Jeans	40	50.00	
4	T Shirt	30	40.00	
5	Sweat Shirt	50	60.00	
6	Sweaters		100.00	
7	Inner Wear	20	30.00	
8	Socks	15	20.00	
9	Salwar Kameez		80.00	
10	Kurta	30	40.00	
11	Saree	30	90.00	
TOTAL				
Remarks				
Supervisor Signature				



Library(Ground Floor, B Block):)



Pantry Room (Ground Floor, B Block) :



ATM(Ground Floor, Hostel Entrance):



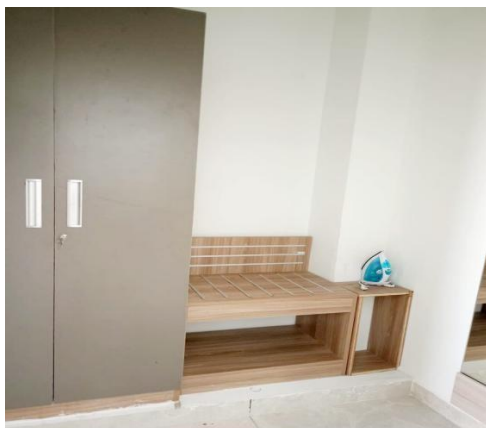
Tuck Shop (Tuck shop, 1st Floor, A Block):



b) Facilities/Infrastructure within the Rooms:

Rooms are provided with small refrigerator, Kettle, Water mug, Reading Lamp, Dustbin, Work Chair, Iron box, Ironing board, Balcony chairs, Room chairs, Smart TV without DTH, Clothes Dryer Stand, Mosquito repellent machine, Room Freshener, Almira, Digital Safe Locker, LAN connectivity (Plug n Play) and Wi-Fi connectivity.

Room:



c) Room Services:

Cleaning will be done mostly on a daily basis or on request basis when needed. Cleaning services will be mostly done during day time and hence it is suggested to handover the keys at reception before attending the sessions. Washing of Towels, Blankets provided in the room will be done on request basis at free of cost. **Officers are responsible for their valuables and are advised to carry any valuables along with them at all the times. They may use Digital Safe Locker to store / safeguard their valuables.**

Mess & Food:



Timings:

Breakfast : 7.30 AM – 9.30 AM

Lunch : 12.30 PM – 2.00 PM

Snacks : 5.30 PM – 6.30 PM

Dinner : 7.30 PM – 9.30 PM (Milk, Boost etc., will be available till 10.30 PM)

-Tea & Cookies during Tea breaks during sessions will be available only from Monday to Friday.

Charges:

Charges per day will be Rs.450/-(+ GST) (Includes Breakfast, Lunch, Dinner, Evening Snacks, Tea& Cookies during tea breaks, Milk/Boost etc., during dinner time).

Payment: Advance should be paid at the Cash Counter in **Cash/UPI Payments** for the entire days of stay (if stay<=30 days), the corresponding bills can be collected from the Cash Counter @Mess itself.

If the officer wishes not to have food for 4 or more days, then the refund can be sought accordingly. The officer has to fill a form for the same at the hostel reception.

Outdoor Game Facilities:

The Sports Kit w.r.t corresponding sport may be collected at the reception of Hostel Building.

Box Cricket (Opposite to Academy Block)



Volley Ball Court(Opposite to Mess)



Football Court with Track





Wi-Fi Details (within Campus):

Wi-Fi 1:

SSID: NACIN-2.4

Password: **opioids@2024**

Wi-Fi 2:

SSID: NACIN-5

Password: **stupor@2024**

Laptop:

The officers are requested to carry their laptop (if any) in order to carry on with their regular interactive activities as part of the ongoing training sessions. The plugging (Charging) facility is available at both the Academy & Hostel Rooms. **Officers are responsible for their valuables and are advised to carry the valuables along with them at all the time.**



Route Map (Reception-Hostel-Mess- Academy)

